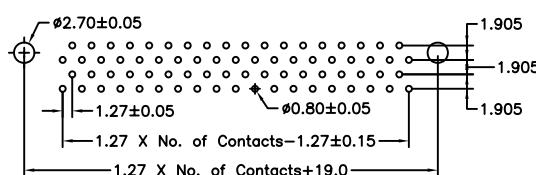
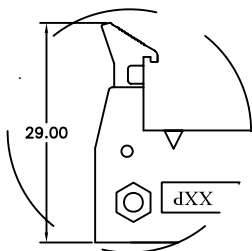
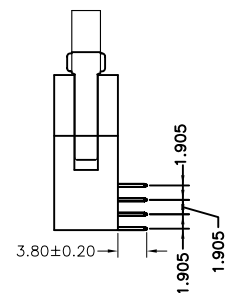
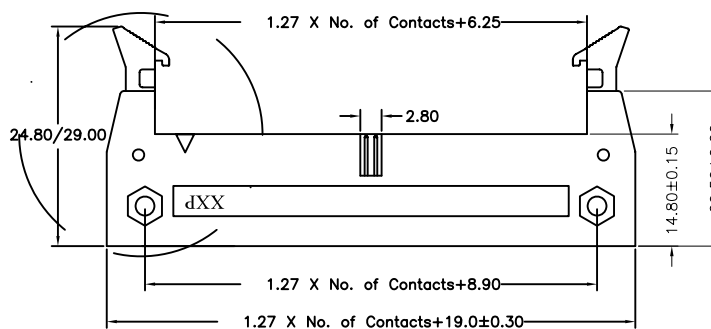
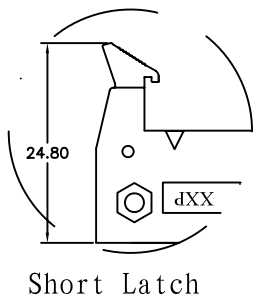
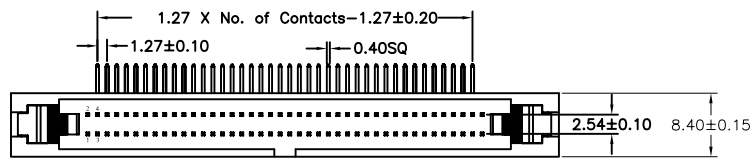


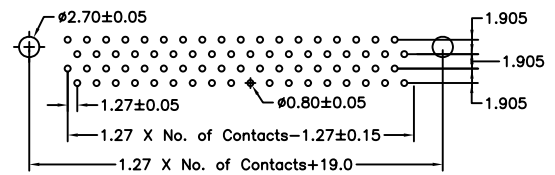
1. 27*2.54mm(0.050"*0.100")EJECTOR HEADER, RIGHT ANGLE TYPE

SPECIFICATIONS

Current Rating : 1AMP
 Contact Resistance : 20mΩ Max.
 Insulation Resistance: 1000MΩ Min.
 Withstanding Voltage : 500V AC/minute
 Operation Temperature: -40° C to +105° C
 Contact Material : Brass
 Contact plating : Gold Flash Plated
 Insulator Material : High Temperature Thermoplastic (UL94V-0)
 Standard: PBT+30%G. F



26, 34, 50 Position



20, 32, 40, 52, 60, 68, 80, 100 Position

Recommended PCB Layout

Ordering Information

EDR1481	-	XX	XX	A	XX	B	1	B	X
No. of Pins Per Row 04~25		Contact Plating 01: Gold Flash 02: Gold 2μ'' 03: Gold 3μ'' 04: Tin Duplex Plating 06: Gold Flash/Tin(100μ'')		Serial Number		Material Type A: PBT B: NYLON 6T C: LCP D: NYLON 9T			Options A: BAG B: TRAY C: TUBE D: TAPE REEL