

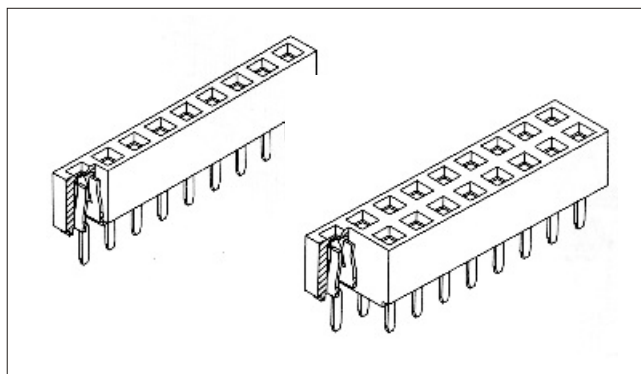
Female Header
Single Row / Dual Row
Straight DIP Type

Pitch:2.00 x2.00mm

Series
222 ~ 224
226 / 228

woxconn

Http://www.woxconn.com

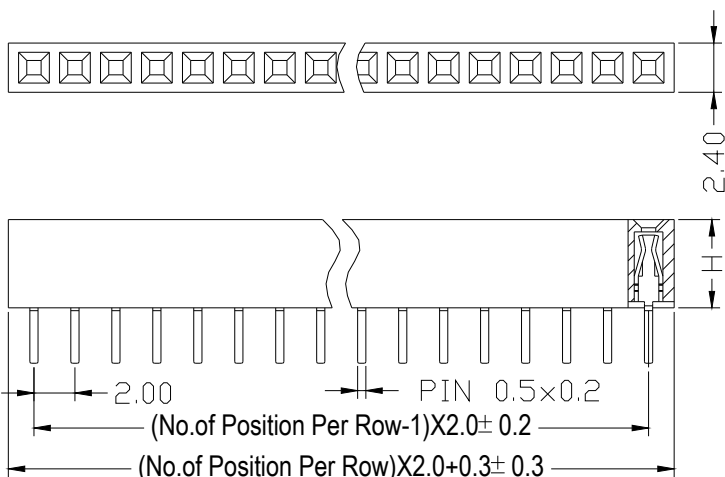


SPECIFICATIONS:

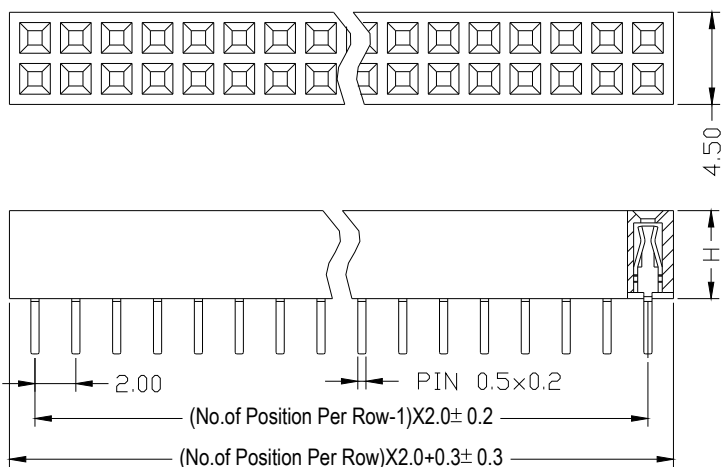
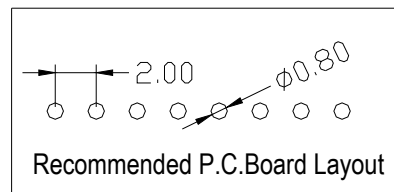
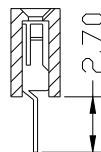
Current Rating: 2.0 AMP
Contact Resistance: 30m• Max
Insulation Resistance: 1000M• Min
Withstand Voltage: 500VAC/minute
Operation Temperature: -40°C to +105°C

MATERIALS:

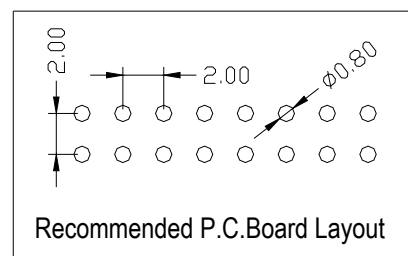
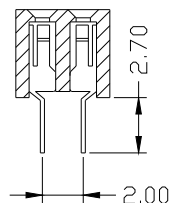
Contact Material: Copper Alloy
Contact Plating: Gold or Tin over 50μ " Ni
Insulator: Glass Filled Polyester(UL94V-0)
Standard: PA 46



H = 2.20mm
H = 3.80mm
H = 4.00mm
H = 4.30mm
H = 4.60mm



H = 2.20mm
H = 3.80mm
H = 4.00mm
H = 4.30mm
H = 4.60mm



Ordering Code

① ② ③ ④ ⑤ ⑥ ⑦ ⑧ ⑨ ⑩
2 2 X X XX S X X 1 0

① Series No.:
2= Female Header

③ Insulator Height:
2 = 2.2mm
3 = 3.8mm
4 = 4.3mm
6 = 4.6mm
8 = 4.0mm

② Pitch: 2= 2.00mm

④ Dip Spacing:
1=Single row
2=Double row

⑤ Number of Contacts:
Single row =01 to 40
Double row=02 to 80

⑥ Tail & Mounting Style:
S=Strait DIP type

⑦ Contact Plated
0=Tin
1=Gold Flash
2=Gold 3u"
3=Gold 5u"
4=Gold 10u"
5=Gold 15u"
6= Gold 30u"

⑧ Material Type
0=PPS
1=PBTP
2=LCP
3=Nylon-66
4=Nylon-6T
5=PA46

⑨ Color:1=Black

⑩ Customer Request

Due to technical progress, all the information provided is subject to change without prior notice.