

简介DESCRIPTION

VacTech开关放电管是在放电间隙内充入适当的气体介质，配以高活性的电子发射材料及放电引燃机构，通过钎焊而制成的一种特殊的金属陶瓷结构的开关放电器件。具有高可靠性和高温特性的KG系列产品，适用于不同的点燃装置，范围从现代的汽车用高强度放电氙灯(Xenon HID Lamp)到等离子焊机和燃气灶等。

VacTech KG Series's is a range of switching spark gaps designed specifically for voltage controlled switching of capacitive discharge circuits, where a high energy, low loss, and a fast rate of switching is required. Ideally suited to applications where a capacitive discharge is utilised with a transformer to obtain pulses of very high voltage levels in the order of several thousand volts.

特点FEATURES

- 极长的寿命时间Extremely long life time
- 性能稳定 Stable performance over life
- 非常低的开关损耗Very low switching losses
- 快速的开关时间 Very short breakdown time
- 高可靠性的稳健性设计 High reliability by robust design
- 温度适应性强Insensitive performance against variations in temperature
- 环保 RoHS compatible

应用APPLICATIONS

- 汽车用高强度放电氙灯Xenon HID Lamp
- 等离子焊机Plasma welding machine
- 燃气灶Gas stoves
- 起爆装置Detonating devices(EBW)
- 瞬变电源Transient Power
- 其它点火装置Other ignition device

认证APPROVALS

UL Recognized: File Number E111526

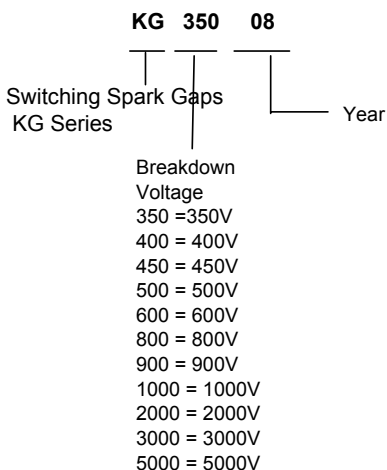
Meets RoHS

订购信息

ORDERING INFORMATION

Tape & Reel Information

KGXXXLTR- Tape & Reel perQuantity =1,000/Reel



测试环境 (@ 25°C)

Parameter	Min	Typ	Max	Units
DC Breakdown Voltage	315	<b>350</b>	385	V
	360	<b>400</b>	440	V
	405	<b>450</b>	495	V
	423	<b>470</b>	517	V
	450	<b>500</b>	550	V
	540	<b>600</b>	660	V
	720	<b>800</b>	880	V
	810	<b>900</b>	990	V
	900	<b>1000</b>	1100	V
	1700	<b>2000</b>	2300	V
Insulation Resistance	2550	<b>3000</b>	3450	V
	4250	<b>5000</b>	5750	V
Insulation Resistance	10 <sup>10</sup>	-	-	Ω
Capacitance	-	-	1.5	pF
Operational Temperature	-40	-	+125	°C

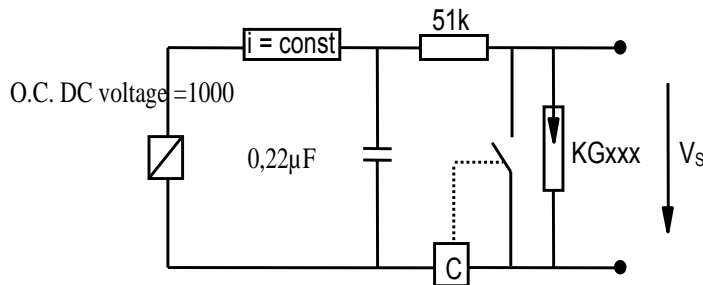
(See detailed specifications for more information.)

参数规格 SPECIFICATIONS

标称击穿电压 V Nominal breakdown voltage V	315...385 90...110	V %
初始值 Initial values		
静态击穿电压 Static breakdown voltage V 24小时暗箱存放首次击穿电压 First ignition value V, after 24 hours in darkness	≤420	V
后续击穿电压 Following ignition values V	300 ... 400	
电气寿命 Electrical life time		
击穿电压 Breakdown voltage V 24小时暗箱存放首次击穿电压 First ignition value after 24 hours in darkness	≤420	V V
后续击穿电压 Following ignition values V	300 ... 420	
测试电路参数 Test circuit parameters		
开路电压 Open circuit voltage V	500	V
电阻 Loading resistance R	10	k
电容 Discharge capacitance C Inductance	680	nF
最大开关电流 Discharge peak current I <sub>p</sub>	0,5 max. 500	μH A
开关时间 Breakdown time	≤50	ns
最大开关频率 Maximum switching frequency	200	Hz
开关次数 Service life ( Switchings )	10 <sup>5</sup>	Ignitions
绝缘电阻 (测试电压 100 V <sub>dc</sub> ) Insulation resistance at 100 V <sub>dc</sub>	≥1	GΩ
工作温度 Switching operations	-40~ +125°C	°C
重量 Weight	~2	g

特性图 PERFORMANCE CHARACTERISTICS

1、QC点火电压测试及电路推荐参数:



- Discharge current = 10-20mA      点火电流 = 10-20mA

2、QC寿命测试及电路推荐参数:

- V<sub>dc</sub> Open circuit voltage 500V
- R 10kOhm
- C 680nF
- L 0,5μH
- KG350 开关管 峰值电流~500A

(在暗箱进行测试)

