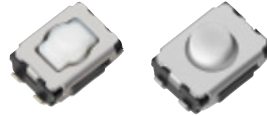


### 4.7×3.5 mm Square Light Touch Switches

Japan

Type: **EVQP2**

An extra-small-sized switch for creating medium and short push travel and meeting the needs for a high-operating force and long operation life



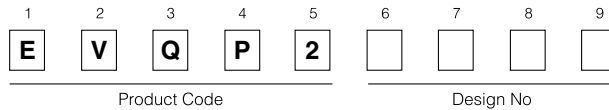
#### ■ Features

- Creating medium and short push travel
- Meeting the need for a high operating force and long operation life
- High mountability by J-bent(4 terminals)

#### ■ Recommended Applications

- Keyless Entry Systems (Automotive)
- Car Audio Equipment
- Audio Visual Equipment

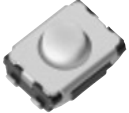
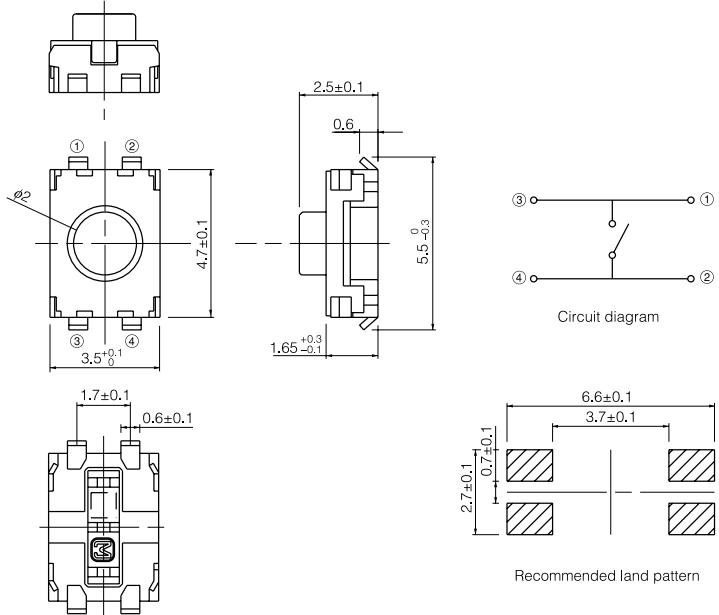
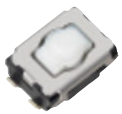
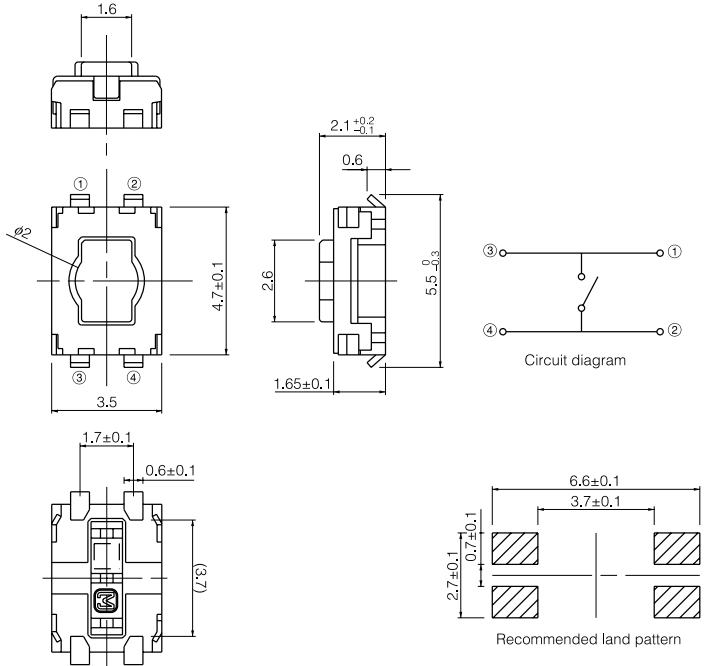
#### ■ Explanation of Part Numbers



#### ■ Major Specifications

		Medium Push Travel	Short Push Travel
Electrical	Power	20 mA 15 V dc max.	
	Contact Resistance	100 mΩ max.	
	Insulation Resistance	100 mΩ min.	
	Dielectric Withstanding Voltage	250 V ac (1 minute)	
	Bouncing	10 ms max.	
Mechanical	Operating Force	2.5 N, 3.5 N 5 N	1 N, 1.6 N, 2.4 N, 3.5 N
	Travel	0.70 mm	0.25 mm
	Push Strength	50 N (1 minute)	
Endurance	Operating Life	2.5 N: 1000000 cycles min.	1 N, 1.6 N: 1000000 cycles min.
		3.5 N: 500000 cycles min.	2.4 N: 500000 cycles min.
		5 N: 200000 cycles min.	3.5 N: 200000 cycles min.
	Operating Temperature	-40 °C to 85 °C	
Storage Temperature	-40 °C to 85 °C (Taping -20 °C to +60 °C)		
Minimum Quantity/Packing Unit		4000 pcs. (Reel Pack)	
Quantity/Carton		20000 pcs./case	

■ Dimensions in mm (not to scale)

<p><b>No. 1</b></p> <p>Japan</p> <p>Medium push travel With J-bent terminals (With Ground terminal)</p> 	 <p>Technical drawings for No. 1 switch showing dimensions and circuit diagram. Dimensions include: top view width 4.7±0.1, bottom view width 3.5<sup>+0.1</sup><sub>0</sub>, terminal spacing 1.7±0.1, terminal width 0.6±0.1, side view height 5.5<sup>0</sup><sub>-0.3</sub>, terminal height 2.5±0.1, and base width 1.65<sup>+0.3</sup><sub>-0.1</sub>. The circuit diagram shows a switch with terminals 1, 2, 3, and 4. The recommended land pattern shows a 6.6±0.1 wide area with 3.7±0.1 spacing and 2.7±0.1 height.</p>
<p><b>No. 2</b></p> <p>Japan</p> <p>Short push travel With J-bent terminals (With Ground terminal)</p> 	 <p>Technical drawings for No. 2 switch showing dimensions and circuit diagram. Dimensions include: top view width 1.6, bottom view width 3.5, terminal spacing 1.7±0.1, terminal width 0.6±0.1, side view height 5.5<sup>0</sup><sub>-0.3</sub>, terminal height 2.1<sup>+0.2</sup><sub>-0.1</sub>, and base width 1.65±0.1. The circuit diagram shows a switch with terminals 1, 2, 3, and 4. The recommended land pattern shows a 6.6±0.1 wide area with 3.7±0.1 spacing and 2.7±0.1 height.</p>