



## CLC520

### Amplifier with Voltage Controlled Gain, AGC+*Amp*

#### General Description

The CLC520 is a wideband DC-coupled amplifier with voltage-controlled gain (AGC). The amplifier has a high-impedance, differential signal input, a high-bandwidth gain control input and a single-ended voltage output. Signal channel performance is outstanding with 160MHz small signal bandwidth, 0.5 degree linear phase deviation (to 60MHz) and 0.04% signal nonlinearity at 4V<sub>pp</sub> output.

Gain-control is very flexible. Maximum gain may be set over a nominal range of 2 to 100 with one external resistor. In addition, the gain-control input provides more than 40dB of voltage-controlled gain adjustment from the maximum gain setting. For example, a CLC520 may be set for a maximum gain of 2 (or 6dB) for a voltage-controlled gain range from 6dB to less than -34dB. Alternatively, the CLC520 could be set for a maximum gain of 100 (40dB) for a voltage-controlled gain range from 40dB to less than 0dB.

Besides being flexible, the gain-control is easy to use. Gain-control bandwidth is superb, 100MHz, simplifying AGC/ALC loop stabilization. And since the gain is minimum with a zero volt input and maximum with a +2 volt input, driving the control input is simple.

Finally, differential inputs, and a ground-referenced voltage output take the trouble out of designing DC-coupled AGC circuits for display normalizers, etc. The CLC520 is available in several versions:

CLC520AJP	-40°C to +85°C	14-pin plastic DIP
CLC520AJE	-40°C to +85°C	14-pin plastic SOIC
CLC520ALC	-40°C to +85°C	dice
CLC520AMC	-55°C to +125°C	dice qualified to Method 5008, MIL-STD-883, Level B

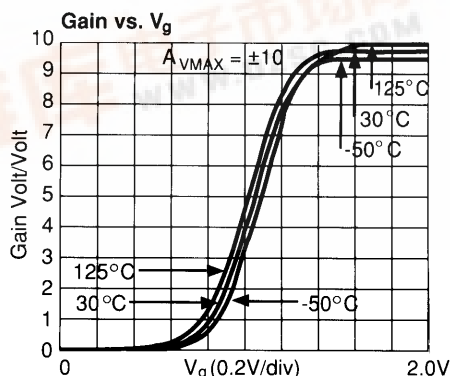
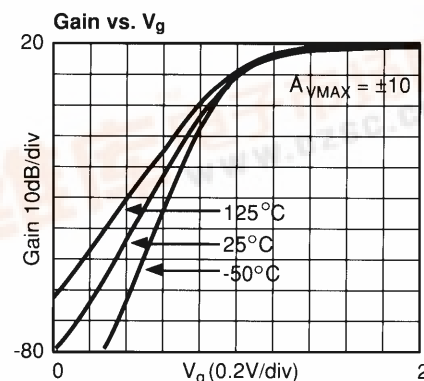
DESC SMD number: 5962-91694

#### Features

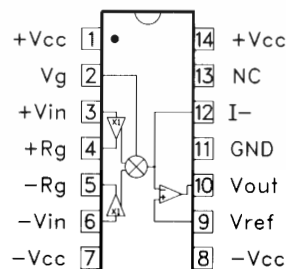
- 160MHz, -3dB bandwidth
- 2000V/μsec slew rate
- 0.04% signal nonlinearity at 4V<sub>pp</sub> output
- -43dB feedthrough at 30MHz
- User adjustable gain range
- Differential voltage input and single-ended voltage output

#### Applications

- Wide-bandwidth AGC systems
- Automatic signal-leveling
- Video signal processing
- Voltage controlled filters
- Differential amplifier
- Amplitude modulation



#### Pinout DIP & SOIC



# CLC520 Electrical Characteristics ( $A_v = +10$ , $V_{cc} = \pm 5V$ , $R_L = 100\Omega$ , $R_f = 1k\Omega$ , $R_g = 182\Omega$ , $V_g = +2V$ )

PARAMETERS	CONDITIONS	TYP	MAX & MIN RATINGS				UNITS	SYMBOL
Ambient Temperature	CLC520AJ	+25°C	-40°C	+25°C	+85°C			
<b>FREQUENCY DOMAIN RESPONSE</b>								
-3dB bandwidth	$V_{out} < 0.5V_{pp}$	160	>110	>120	>120		MHz	SSBW
	$V_{out} < 0.5V_{pp}$ (AJE only)	140	>90	>100	>100		MHz	SSBW
	$V_{out} < 4.0V_{pp}$	140	>85	>100	>100		MHz	LSBW
-3dB bandwidth	$V_{out} < 0.5V_{pp}$							
gain control channel	$V_{in} = +0.2V$ , $V_g = +1VDC$	100	>80	>80	>80		MHz	SBWC
gain flatness	$V_{out} < 0.5V_{pp}$							
peaking	0.1MHz to 30MHz	0	<0.4	<0.3	<0.4		dB	GFPL
peaking	0.1MHz to 20MHz	0	<0.7	<0.5	<0.7		dB	GFPH
rolloff	0.1MHz to 30MHz	0.1	<0.4	<0.3	<0.4		dB	GFRL
rolloff	0.1MHz to 60MHz	0.5	<1.3	<1	<1.3		dB	GFRLH
linear phase deviation	0.1MHz to 60MHz	0.5	<1.2	<1	<1.2		°	LPD
feedthrough	$V_g = 0V$ , $V_{in} = -22dBm$							
		-38	<-31	<-31	<-31		dB	FDTH
rise and fall time	0.5V step	2.5	<3.7	<3	<3		ns	TRS
	4.0V step	3.7	<5	<5	<5		ns	TRL
settling time to $\pm 0.1\%$	2.0V step	12	<18	<18	<18		ns	TS
overshoot	0.5V step	0	<15	<15	<15		%	OS
slew rate	4V step	2000	>1450	>1450	>1450		V/ $\mu$ sec	SR
2nd harmonic distortion	$2V_{pp}$ , 20MHz	-47	<-40	<-40	<-35		dBc	HD2
3rd harmonic distortion	$2V_{pp}$ , 20MHz	-60	<-50	<-50	<-45		dBc	HD3
equivalent output noise	(+10 for input noise) <sup>1</sup>							
noise floor	1MHz to 200MHz	-132	<-130	<-130	<-129		dBm/Hz	SNF
integrated noise	1MHz to 200MHz	800	<1000	<1000	<1100		$\mu$ V	INV
differential gain <sup>2</sup>	at 3.58MHz	0.15					%	DG
differential phase <sup>2</sup>	at 3.58MHz	0.15					°	DP
<b>STATIC, DC PERFORMANCE</b>								
integral signal nonlinearity	$V_{out} = 4V_{pp}$	0.04	<0.1	<0.1	<0.2		%	SGNL
gain accuracy	$R_f = 1k\Omega$ , $R_g = 182\Omega$							
for nominal max gain = 20dB		$\pm 0$	< $\pm 1.0$	< $\pm 0.5$	< $\pm 0.5$		dB	GACCU
*output offset voltage		40	<150	<120	<150		mV	VOS
average temperature coefficient		100	<400	—	<300		$\mu$ V/°C	DVOS
*input bias current		12	<61	<28	<28		$\mu$ A	IB
average temperature coefficient		100	<415	—	<165		nA/°C	DIB
input offset current		0.5	<4	<2	<2		$\mu$ A	IOS
average temperature coefficient		5	<40	—	<20		nA/°C	DIOS
power supply sensitivity	output referred DC	10	<28	<28	<28		MV/V	PSS
common mode rejection ratio	input referred	70	>59	>59	>59		dB	CMRR
*supply current	no load	28	<38	<38	<38		mA	ICC
$V_{in}$ signal input	resistance	200	>50	>100	>100		k $\Omega$	RIN
	capacitance	1	<2	<2	<2		pF	CIN
$V_{in}$ differential voltage range	for $R_g = 182\Omega$ only	$\pm 280$	> $\pm 250$	> $\pm 250$	> $\pm 210$		mV	DMIR
$V_{in}$ common mode voltage range		$\pm 2.2$	>1.4	> $\pm 2$	> $\pm 2$		V	CMIR
$V_g$ control input	resistance	750	>535	>600	>600		$\Omega$	RINC
	capacitance	1	<2	<2	<2		pF	CINC
$V_g$ input voltage	for maximum gain	1.6	<2	<2	<2		k $\Omega$	VGHI
	for minimum gain	0.4	>0	>0	>0		V	VGLO
output impedance	at DC	0.1	<0.3	<0.2	<0.2		$\Omega$	RO
output voltage range	no load	$\pm 3.5$	> $\pm 3$	> $\pm 3.2$	> $\pm 3.2$		V	VO
output current		$\pm 60$	> $\pm 35$	> $\pm 50$	> $\pm 50$		mA	IO

Min/max ratings are based on product characterization and simulation. Individual parameters are tested as noted. Outgoing quality levels are determined from tested parameters.

## Absolute Maximum Ratings

$V_{cc}$	$\pm 7V$
$I_{out}$	output is short circuit protected to ground, however, maximum reliability is obtained if $I_{out}$ does not exceed...
common mode input voltage	60mA
$V_{in}$ differential input voltage	$\pm V_{cc}$
$V_g$ input voltage	10V
$V_{ref}$ input voltage	$\pm V_{cc}$
junction temperature	$\pm V_{cc}$
operating temperature range	+150°C
AJ/AI	-40°C to +85°C
storage temperature range	-65°C to +150°C
lead solder duration (+300°C)	10 sec
ESD rating (human body model)	500V

## Miscellaneous Ratings

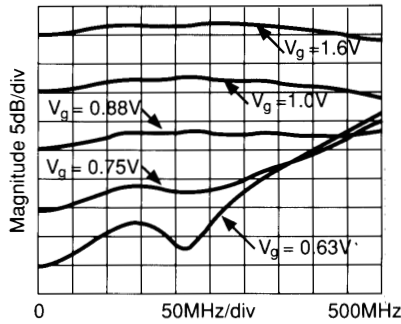
recommended gain range:	$\pm 2$ to $\pm 100$
recommended $V_{REF}$	$\pm 150mV$
Notes:	* AJ 100% tested at +25°C.
note 1:	Measured at $A_{vmax} = 10$ , $V_g = +2V$
note 2:	Differential gain and phase are measured at: $A_v = +20$ , $V_g = +2V$ , $R_L = 150\Omega$ , $R_f = 2k\Omega$ , $R_g = 182\Omega$ , equivalent video signal of 0-100 IRE with 40 IRE <sub>pp</sub> at 3.58 MHz.
Transistor Count	42

## Package Thermal Resistance

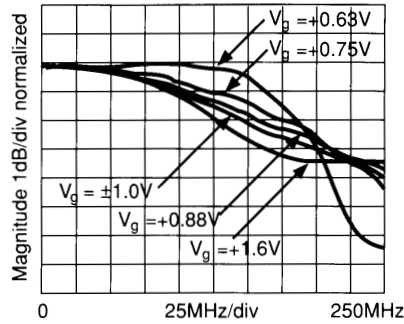
Package	$\theta_{JC}$	$\theta_{JA}$
AJP	55°C/W	105°C/W
AJF	45°C/W	120°C/W

# Typical Performance Characteristics ( $T_A = 25^\circ$ , $A_V = +10$ , $V_{CC} = \pm 5V$ , $R_L = 100\Omega$ , $R_f = 1k\Omega$ , $R_g = 182\Omega$ , $V_g = +2V$ )

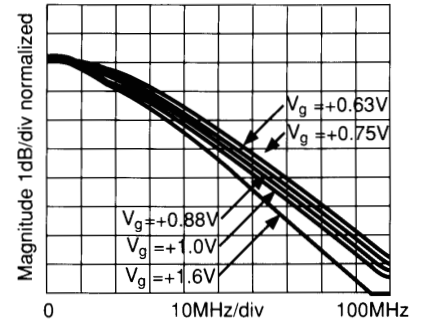
Frequency Response,  $A_{VMAX} = \pm 2$



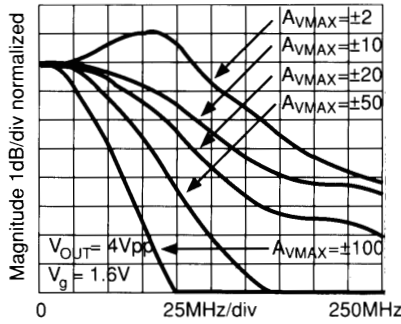
Frequency Response,  $A_{VMAX} = \pm 10$



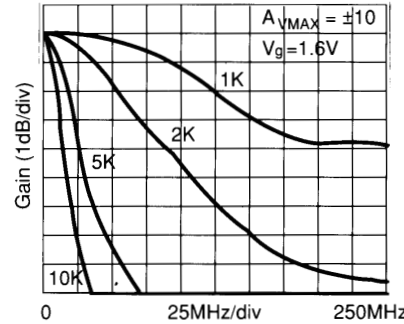
Frequency Response,  $A_{VMAX} = \pm 100$



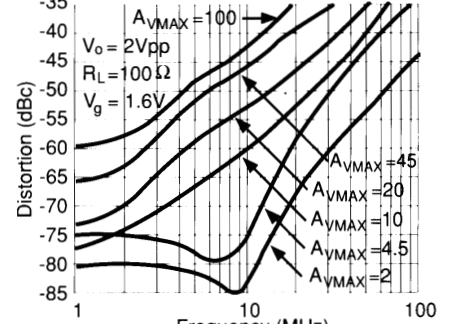
Large Signal Frequency Response



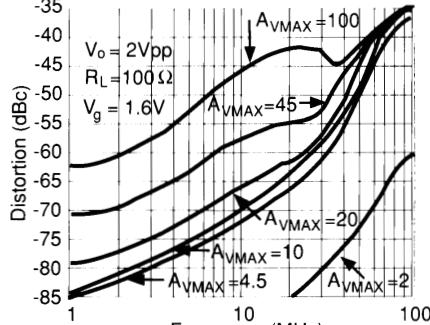
Small Signal Gain vs.  $R_L$



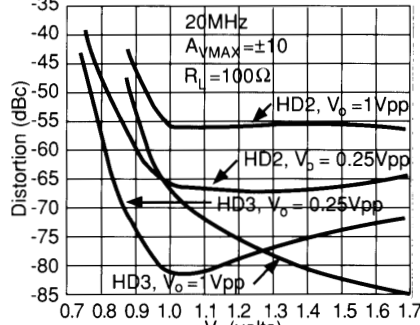
2nd Harmonic Distortion



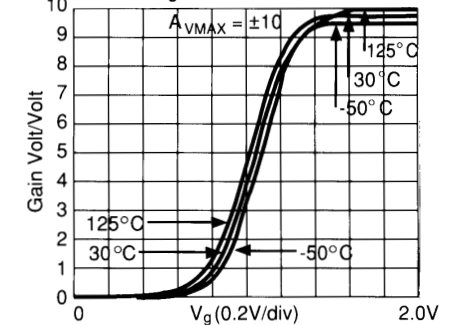
3rd Harmonic Distortion



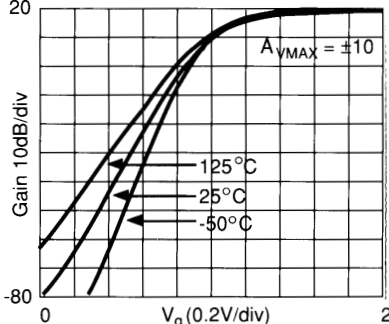
2nd and 3rd Harmonic Distortion vs.  $V_g$



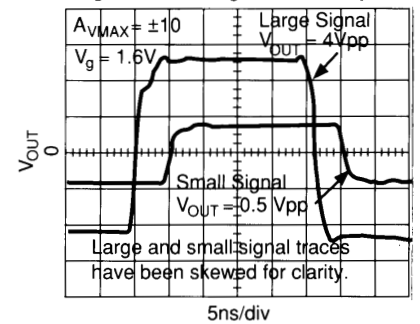
Gain vs.  $V_g$



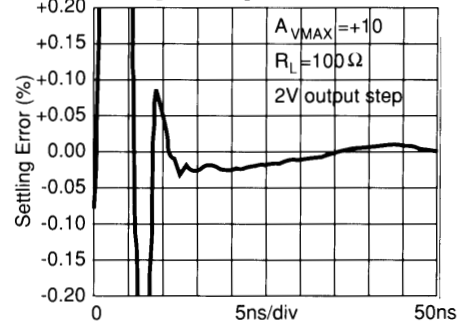
Gain vs.  $V_g$



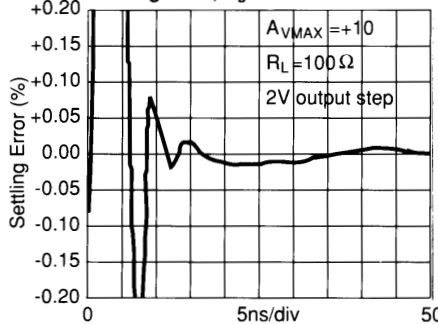
Large and Small Signal Pulse Response



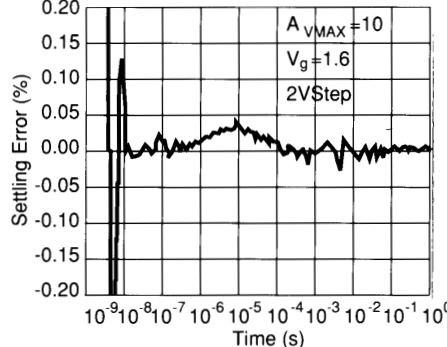
Settling Time,  $V_g = 2V$



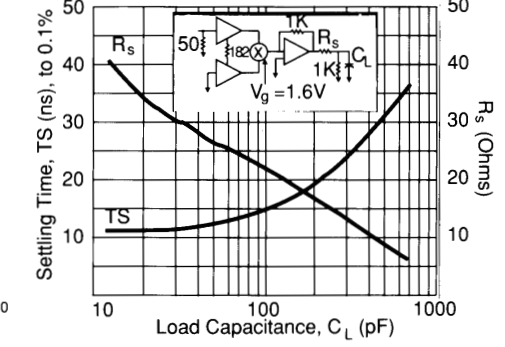
Settling Time,  $V_g = 1.2V$



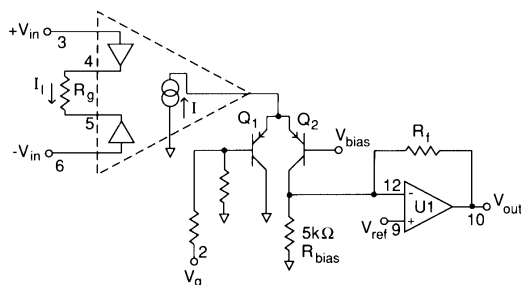
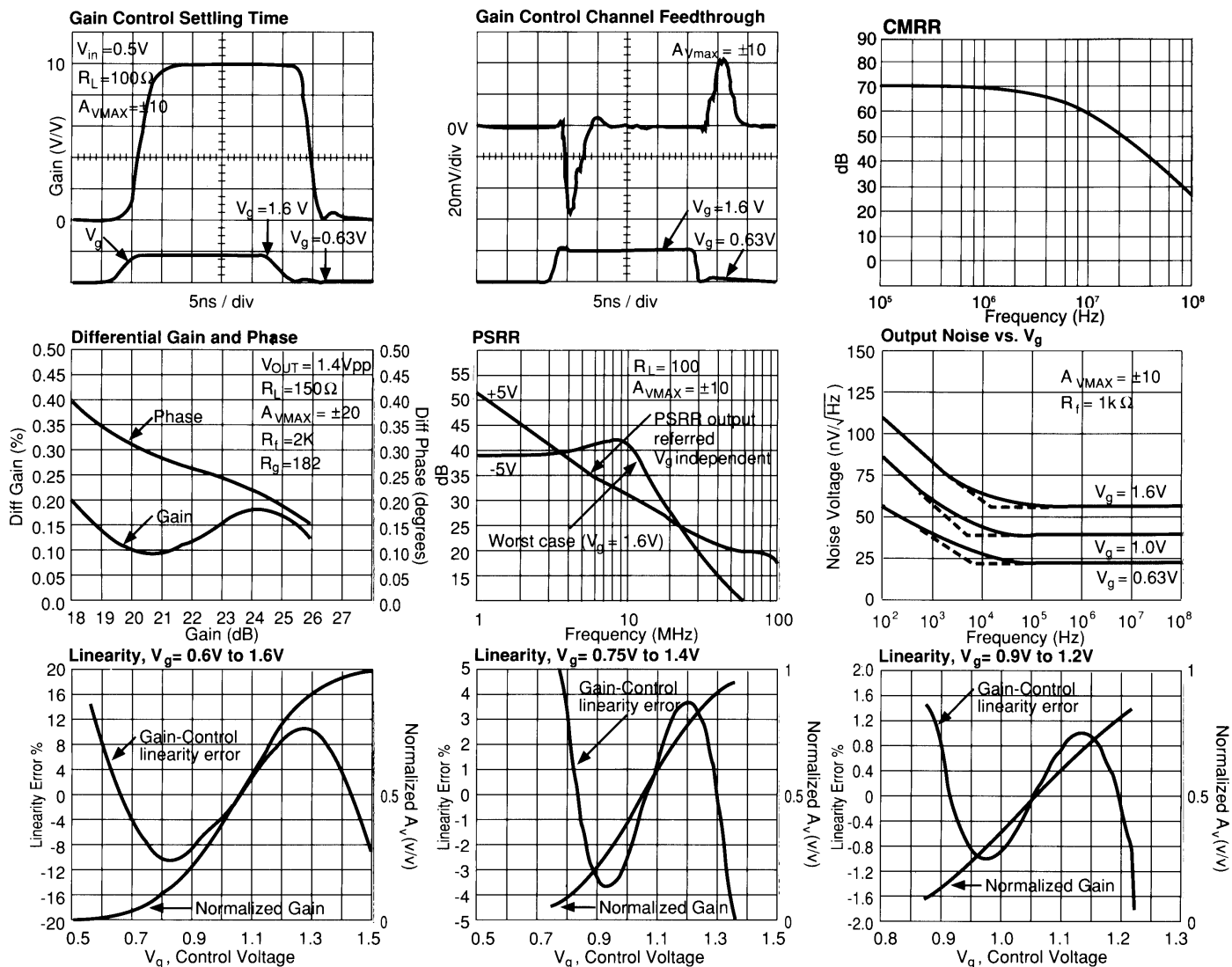
Long-Term Settling Time



Settling Time vs. Capacitive Load,  $A_{VMAX} = \pm 10$



# Typical Performance Characteristics ( $T_A = 25^\circ$ , $A_V = +10$ , $V_{CC} = \pm 5V$ , $R_L = 100\Omega$ , $R_f = 1k\Omega$ , $R_g = 182\Omega$ , $V_g = +2V$ )



**Figure 1: CLC520 Simplified Schematic**

## Simplified Circuit Description

A simplified schematic for the CLC520 is given in Figure 1.  $+V_{in}$  and  $-V_{in}$  are buffered with closed-loop voltage followers inducing a signal current in  $R_g$  proportional to  $(+V_{in}) - (-V_{in})$ , the differential input voltage. This current controls a current source which supplies two well-matched transistors, Q1 and Q2.

The current flowing through Q2 is converted to the final output voltage using  $R_f$  and output amplifier, U1. By changing the fraction of the signal current  $I$  which flows through Q2 the

gain is changed. This is done by changing the voltage applied differentially to the bases of Q1 and Q2. For example, with  $V_g = 0$ , Q1 conducts heavily and Q2 is off. With none of  $I$  flowing through  $R_f$ , the CLC520's input to output gain is strongly attenuated. With  $V_g = 2V$ , Q1 is off and all of the signal current flows through Q2 to  $R_f$  producing maximum gain. With  $V_g$  set to 1.1V, the bases of Q1 and Q2 are set to approximately the same voltage, Q1 and Q2 have the same collector currents – equal to one half of signal current  $I$ , thus the gain is approximately one half the maximum gain at  $V_g = 1.1V$ .

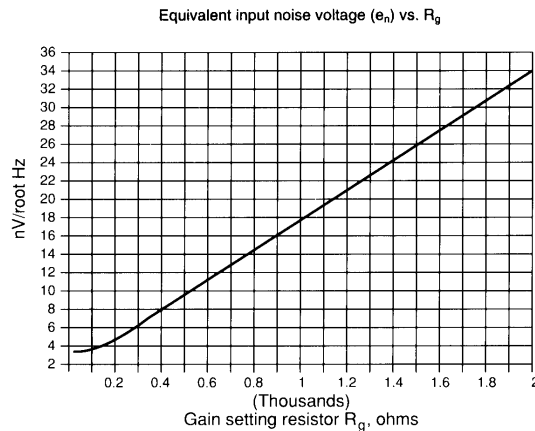
## Typical application circuit

Figure 2 illustrates a voltage-controlled gain block offering broadband performance in a  $50\Omega$  system environment. The input signal is applied to pin 3 of the CLC520 and terminating resistor R2. Gain-control signals are applied to pin 2. The net gain-control port input impedance is  $50\Omega$ , set by the parallel combination of  $R_1$  and the  $750\Omega$  input impedance of pin 2 of the CLC520.

$R_f$  is set to the standard value,  $1k\Omega$ , and  $R_g$  sets the maximum voltage gain (with a high  $Z$  load connected to the output) to  $10V/V$ . Output impedance is set by  $R_o$  to  $50\Omega$  so with  $50\Omega$  source and load terminations, the gain is approximately 14dB.

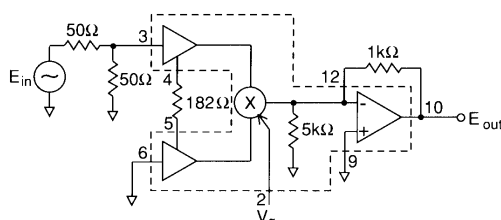




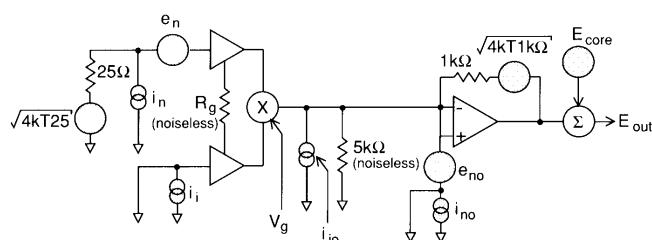


### Figure 5

Several points should be made concerning this model. First, external component noise contributions need to be factored in when computing total output referred noise. The only exception is  $R_p$ , where its noise contribution is already factored in. Second, the model ignores flicker noise contributions. Applications where noise below approximately 100KHz must be considered should use this model with caution. Third this model very accurately predicts output noise voltage for the typical application circuit (see above) but will be less accurate the further component values deviate from those in the typical application circuit. In general, however, the model should predict the equivalent output noise above the flicker noise region to within a few dB of actual performance over the normal range of  $A_{vmax}$  and component values.



### Figure 6: Typical Circuit



**Figure 7: Noise Model for Typical Circuit**

### Calculating CLC520 output noise in a typical circuit

To calculate the noise in a CLC520 application, the noise terms given for the amplifier as well as the noise terms of the external components must be included. To clarify the techniques used, output noise in a typical circuit will be calculated. (Figure 6)

The noise model is depicted in Figure 7. The diagram assumes spot noise sources with  $V_{\text{rms}}/\sqrt{\text{Hz}}$  and  $\text{Amps}_{\text{rms}}/\sqrt{\text{Hz}}$  units. The Thevenin equivalent of the source and input termination is used:  $25\Omega$  in series with a noise voltage source.  $R_0$  is assumed noiseless since its effect is included in  $e_n$ . The internal  $5k\Omega$  resistor at the CLC520 core output is also assumed noiseless since its effect is included in  $i_o$ . The noise contribution from  $R_i$  is modeled as a noise voltage source.

The easiest way to analyze the output noise of this circuit is to break the analysis into three pieces: an input buffer noise calculation, an output buffer noise calculation, and a core noise calculation. The output contribution of the input buffer varies with the gain. The output contribution of the output buffer is constant. The core noise contribution is zero at maximum and minimum gain and reaches a peak at  $A_{vmax}/2$ . Summing the noise powers for each of these terms gives the total output noise power.

Since we assume all noise terms are uncorrelated, the equivalent input noise voltage squared is given by:

$$E_{it}^2 = 4kT25 + (I_n25)^2 + e_n^2$$

$i_i$  does not contribute to the input buffer noise because the input buffer inverting input is grounded.  $e_n$  is taken from Figure 5.

The equivalent output buffer noise is given by:

$$E_{ot}^2 = (i_{io} \cdot 1k\Omega)^2 + 4kT(1k\Omega) + [e_{no} (1 + \frac{1k\Omega}{5k\Omega})]^2$$

$I_{no}$  does not contribute to the output buffer noise because the output buffer non-inverting input is grounded.

The core noise is already output referred and is  $37\text{nV}/\sqrt{\text{Hz}}$  at  $V_g = 1.1$  ( $A_{v\text{max}}/2$ ) and approaches zero as  $A_v$  goes to 0 or  $A_{v\text{max}}$ .

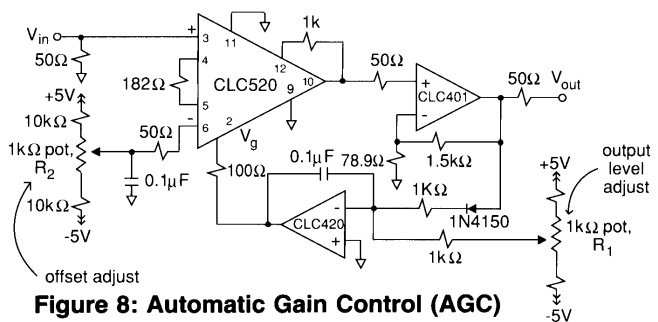
The total output noise voltage is given by:

$$E_{\text{TOTAL}}^2 = E_{\text{it}}^2 A_v^2 + E_{\text{ot}}^2 + C E_{\text{core}}^2$$

Where  $A_v$  is the input to output voltage gain (which varies as  $V_g$  varies).

C accounts for the variation in core noise contribution as  $V_g$  is adjusted.  $C=1$  when gain  $A_v$  is  $A_{vmax}/2$ .  $C$  is zero at  $A_{vmax}$  and  $A_v=0$  and varies between 0 and 1 for all other values.

Using these equations, total calculated output noise for the circuit was  $20\text{nV}/\sqrt{\text{Hz}}$  at minimum gain,  $49\text{nV}/\sqrt{\text{Hz}}$  at mid-gain, and  $53\text{nV}/\sqrt{\text{Hz}}$  at maximum gain.



### Figure 8: Automatic Gain Control (AGC) Loop

## AGC circuits

Figure 8 shows a typical AGC circuit. The CLC520 is followed up with a CLC401 for higher overall gain. The output of the CLC401 is rectified and fed to an inverting integrator using a CLC420 (wideband voltage feedback op amp). When the output voltage,  $V_{out}$ , is too large the integrator output voltage ramps down reducing the net gain of the CLC520 and  $V_{out}$ . If the output voltage is too small, the integrator ramps up increasing the net gain and the output voltage. Actual output level is set with R1. To prevent shifts in DC output voltage with changes in input signal level, trim pot R2 is provided.

AGC circuits are always limited in the range of input signals over which constant output level can be maintained. In this circuit, we would expect that reasonable AGC action could be maintained over the gain adjustment range of the CLC520 (at least 40dB). In practice, rectifier dynamic range limits reduce this slightly.

## Evaluation Board

Evaluation PC boards (part number 730029 for through-hole and 730023 for SOIC) for the CI C520 are available.

**This page intentionally left blank.**

# CLC520 Amplifier with Voltage Controlled Gain, AGC+Amp

---

## Customer Design Applications Support

National Semiconductor is committed to design excellence. For sales, literature and technical support, call the National Semiconductor Customer Response Group at **1-800-272-9959** or fax **1-800-737-7018**.

## Life Support Policy

National's products are not authorized for use as critical components in life support devices or systems without the express written approval of the president of National Semiconductor Corporation. As used herein:

1. Life support devices or systems are devices or systems which, a) are intended for surgical implant into the body, or b) support or sustain life, and whose failure to perform, when properly used in accordance with instructions for use provided in the labeling, can be reasonably expected to result in a significant injury to the user.
2. A critical component is any component of a life support device or system whose failure to perform can be reasonably expected to cause the failure of the life support device or system, or to affect its safety or effectiveness.



### National Semiconductor Corporation

1111 West Bardin Road  
Arlington, TX 76017  
Tel: 1(800) 272-9959  
Fax: 1(800) 737-7018

### National Semiconductor Europe

Fax: (+49) 0-180-530 85 86  
E-mail: europe.support.nsc.com  
Deutsch Tel: (+49) 0-180-530 85 85  
English Tel: (+49) 0-180-532 78 32  
Francais Tel: (+49) 0-180-532 93 58  
Italiano Tel: (+49) 0-180-534 16 80

### National Semiconductor Hong Kong Ltd.

2501 Miramar Tower  
1-23 Kimberley Road  
Tsimshatsui, Kowloon  
Hong Kong  
Tel: (852) 2737-1600  
Fax: (852) 2736-9960

### National Semiconductor Japan Ltd.

Tel: 81-043-299-2309  
Fax: 81-043-299-2408