

## »» Features



- ☐ 15A general purpose Power Relays.
- ☐ UL/CUL,CSA,TUV approved.
- ☐ Optional for AC & DC coil.
- ☐ Optional with and or w/out lamp, push-to-test button, stud, etc.
- ☐ Sealed and washable type w/ knock-off nib vent.
- ☐ Plain or top flange cover, PCB and or solder lug / quick terminals.
- ☐ Contact rating up to 15A 250VAC (SPNO).
- ☐ Comply with RoHS-Directive 2002/95/EC.

## »» Type List

Terminal style	Contact form	Designation (provided with)	Enclosure style	
			Dust cover	Flanged cover
S (Quick terminal)	1C (SPDT)	-----	SCLA-S-SPDT-C	SCLA-S-SPDT-C1
	1A (SPNO)		SCLA-S-SPNO-C	SCLA-S-SPNO-C1
	1B (SPNC)		SCLA-S-SPNC-C	SCLA-S-SPNC-C1
	1C (SPDT)	Lamp	SCLA-S-L-SPDT-C	SCLA-S-L-SPDT-C1
	1A (SPNO)		SCLA-S-L-SPNO-C	SCLA-S-L-SPNO-C1
	1B (SPNC)		SCLA-S-L-SPNC-C	SCLA-S-L-SPNC-C1
	1C (SPDT)	Manual	SCLA-S-M-SPDT-C	SCLA-S-M-SPDT-C1
	1A (SPNO)		SCLA-S-M-SPNO-C	SCLA-S-M-SPNO-C1
	1B (SPNC)		SCLA-S-M-SPNC-C	SCLA-S-M-SPNC-C1
	1C (SPDT)	Lamp & Manual	SCLA-S-LM-SPDT-C	SCLA-S-LM-SPDT-C1
	1A (SPNO)		SCLA-S-LM-SPNO-C	SCLA-S-LM-SPNO-C1
	1B (SPNC)		SCLA-S-LM-SPNC-C	SCLA-S-LM-SPNC-C1
P (PCB terminal)	1C (SPDT)	-----	SCLA-P-SPDT-C	-----
	1A (SPNO)		SCLA-P-SPNO-C	-----
	1B (SPNC)		SCLA-P-SPNC-C	-----
	1C (SPDT)	Lamp	SCLA-P-L-SPDT-C	-----
	1A (SPNO)		SCLA-P-L-SPNO-C	-----
	1B (SPNC)		SCLA-P-L-SPNC-C	-----
	1C (SPDT)	Manual	SCLA-P-M-SPDT-C	-----
	1A (SPNO)		SCLA-P-M-SPNO-C	-----
	1B (SPNC)		SCLA-P-M-SPNC-C	-----
	1C (SPDT)	Lamp & Manual	SCLA-P-LM-SPDT-C	-----
	1A (SPNO)		SCLA-P-LM-SPNO-C	-----
	1B (SPNC)		SCLA-P-LM-SPNC-C	-----

## »» Ordering Information

SCL   A   -   S   -   ☐   -   SPNO   -   ☐   -   C  
 1   2   3   4   5   6   7

- |          |                                  |          |                                |
|----------|----------------------------------|----------|--------------------------------|
| 1. SCL   | -- Basic series designation      | 5. SPNO  | -- Single pole normally open   |
|          |                                  | SPNC     | -- Single pole normally closed |
| 2. A     | -- Single pole                   | SPDT     | -- Single pole double throw    |
| 3. P     | -- PCB terminal                  | 6. Blank | -- Standard type               |
| S        | -- Quick terminal                | F        | -- Class F                     |
| 4. Blank | -- Without pilot light           | 7. C     | -- Dust cover                  |
| L        | -- Provided with pilot light     | C1       | -- Flanged cover               |
| M        | -- Provided with manual operator |          |                                |

## »» Contact Rating

Resistive load	15A 240VAC   15A 28VDC
----------------	------------------------

## »» Coil Rating (DC)

Rated voltage (V)	Rated current ±10 % at 23°C (mA)	Coil resistance ±10 % at 23°C (Ω)	Max. continuous voltage at 70°C	Pick up voltage(Max) at 23°C	Drop out voltage(Min) at 23°C	Power consumption at rated voltage
6	150	40	120 % of rated voltage	75 % of rated voltage	10 % of rated voltage	approx. 0.9W
12	75	160				
15	60	250				
24	37	650				
48	19	2600				
110	10	11000				
120	11	11000				

## »» Coil Rating (AC)

Rated voltage (V)	Coil resistance ±10 % at 23°C (Ω)	Max. continuous voltage at 70°C	Pick up voltage(Max) at 23°C	Drop out voltage(Min) at 23°C	Power consumption at rated voltage
12	40	110 % of rated voltage	85 % of rated voltage	30 % of rated voltage	approx. 1.2VA
24	160				
100	3400				
110	3400				
115	3400				

120	3400	110 % of rated voltage	85 % of rated voltage	30 % of rated voltage	approx. 1.2VA
220	13600				
230	13600				
240	13600				

## »» Specification

Contact material	AgSnO alloy	
Contact resistance <sup>(1)</sup>	30mΩ Max. (1A/6VDC by 4 pipes mΩ meter)	
Operate time <sup>(1)</sup>	25 ms Max.	
Release time <sup>(1)</sup>	25 ms Max.	
Insulation resistance <sup>(1)</sup>	100 MΩ Min. (DC 500V)	
Dielectric strength <sup>(1)</sup>	Between live parts & ground : AC 1500V , 50/60Hz 1 min.	
	Between contact and coil : AC 1500V , 50/60Hz 1 min.	
	Between open contact : AC 1000V , 50/60Hz 1 min.	
Vibration resistance	Operating extremes	10~55Hz , amplitude 1.0 mm
	Damage limits	10~55Hz , amplitude 1.0 mm
Shock resistance	Operating extremes	20G
	Damage limits	100G
Life expectancy	Mechanical	10,000,000 operations (frequency 18,000 operations/hr)
	Electrical	100,000 operations (frequency 1,800 operations/hr)
Operating ambient temperature	-25~+70°C (no freezing)	
Weight	Approx. 32 g	

Note : (1) initial value.

## »» Safety Approval

Certified	UL / CUL	CSA	TUV
File No.	E88991	1474292	R9452081

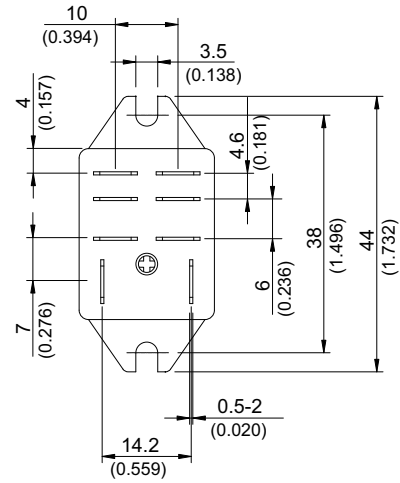
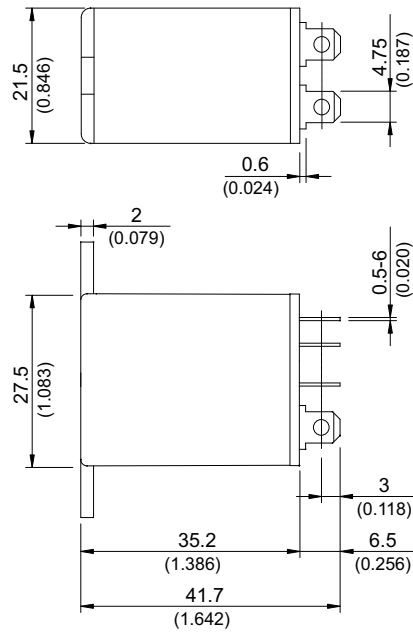
## »» Safety Approval Rating

UL / CUL	CSA	TUV
15A 277VAC (※)	10A 277VAC	15A 250VAC
18A 120VAC (※)	15A 28VDC	15A 30VDC
15A 120VAC	15A, 1/2HP 120VAC	6.2A 120VAC cosφ 0.5
10A 277VAC		
15A 28VDC		
1/2HP 120VAC		

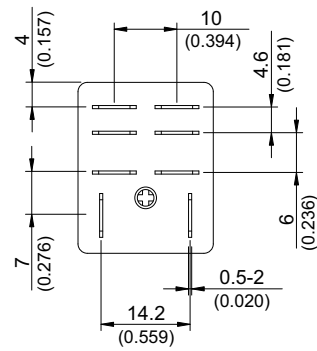
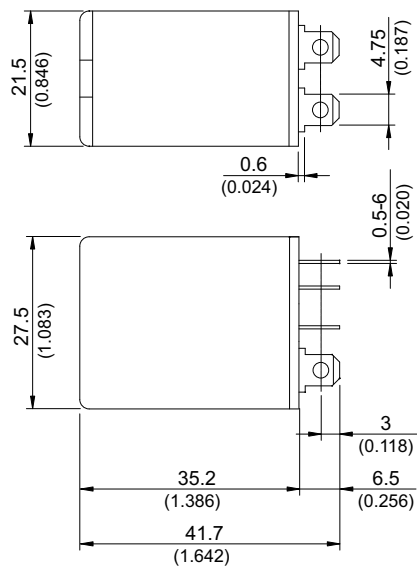
Note : (※) For non-industrial application.

## »» Outline Dimensions

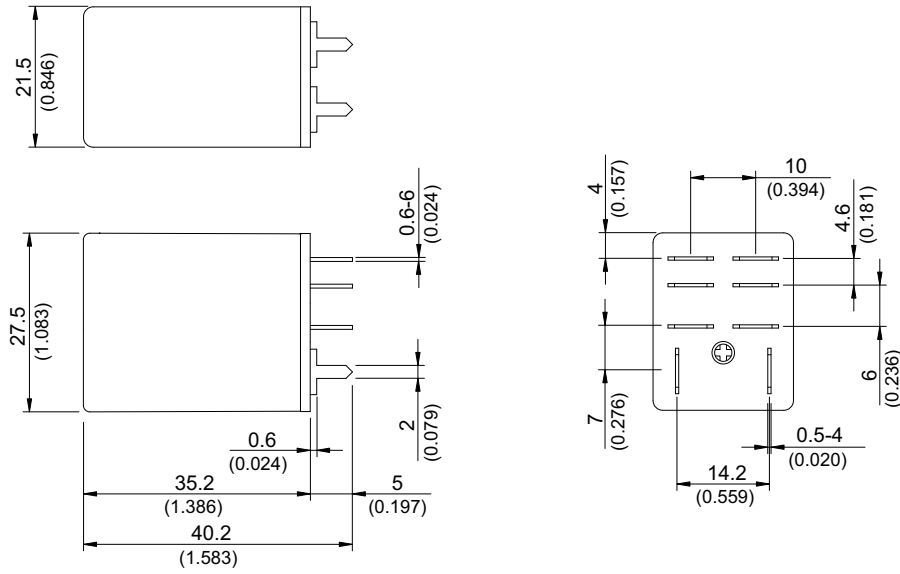
## ◆LA-S C1



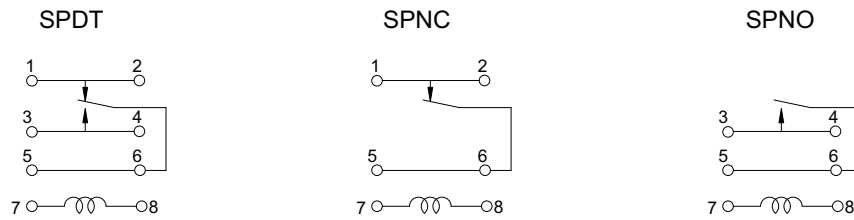
## ◆LA-S C



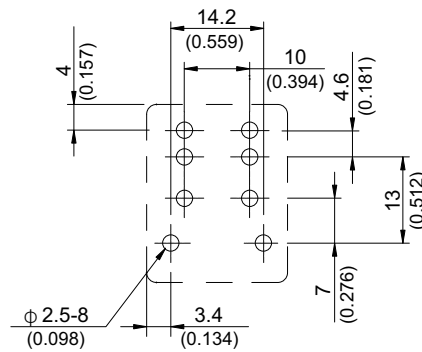
◆ LA-P C



»» Wiring Diagram  
BOTTOM VIEW



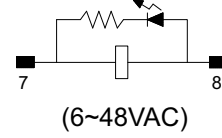
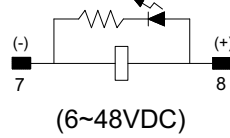
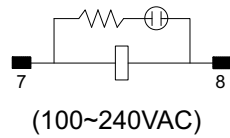
»» PC Board Layout  
BOTTOM VIEW



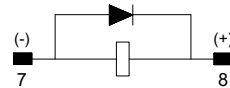
## »» Designation (Provided with)

BOTTOM VIEW

Lamp

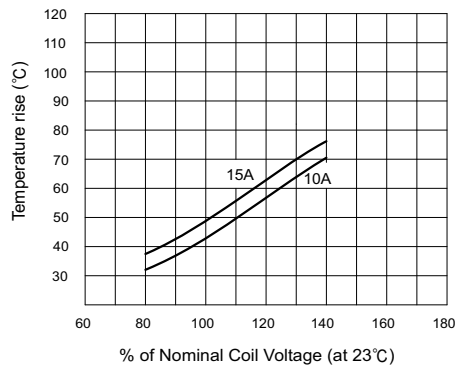


Diode

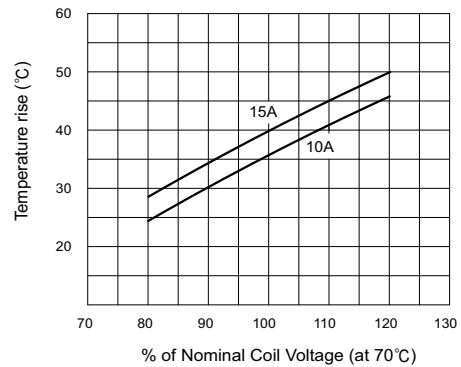


## »» Engineering Data

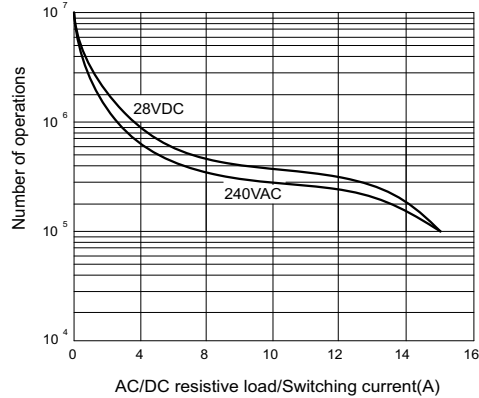
Coil temperature rise



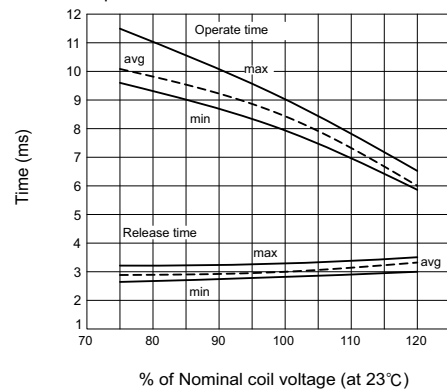
Coil temperature rise



Life expectancy



Operate time/Release time



# Mouser Electronics

Authorized Distributor

Click to View Pricing, Inventory, Delivery & Lifecycle Information:

## Song Chuan:

[SCLA-S-SPDT-C 24 Vdc](#) [SCLA-S-SPDT-C1 12 Vdc](#) [SCLA-S-SPDT-C 120 Vac](#) [SCLA-S-SPDT-C1 120 Vac](#) [SCLA-S-SPDT-C1 24 Vdc](#) [SCLA-S-SPDT-C1 240 Vac](#) [SCLA-S-SPDT-C1 24 Vac](#) [SCLA-S-SPDT-C 12 Vdc](#) [SCLA-S-SPDT-C 24 Vac](#) [SCLA-S-SPDT-C 240 Vac](#)