



SP431

High Voltage Adjustable Precision Shunt Regulators

DESCRIPTION

The SP431 is high-voltage three-terminal adjustable voltage references, with specified thermal stability over applicable industrial and commercial temperature ranges. Output voltage can be set to any value between V_{REF} (2.5V) and 36V with two external resistors. These devices have a typical output impedance of 0.25Ω . Active output circuitry provides a very sharp turn-on characteristic, making the SP431 excellent replacements for low-voltage Zener diodes in many applications, including onboard regulation and adjustable power supplies.

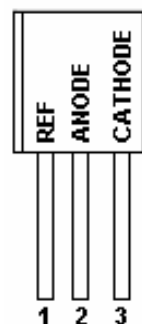
APPLICATIONS

- Battery Power Equipment
- Linear Regulators
- Switch Power Supply
- Cellular Phone
- Digital Cameras
- Computer Disk Drivers
- Instrumentation

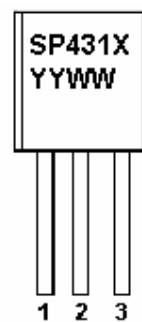
FEATURES

- ◆ Low Output Noise
- ◆ Adjustable Output Voltage, $V_o = V_{ref}$ to 36 V
- ◆ Low Operational Cathode Current
- ◆ 0.2Ω Typical Output Impedance

PIN CONFIGURATION (TO-92)



PART MARKING (TO-92)



X : Grade Code
Y : Year Code
W : Weak Code



SP431

High Voltage Adjustable Precision Shunt Regulators

PIN DESCRIPTION

Pin	Symbol	Description
1	R	REF
2	C	CATHODE
3	A	ANODE

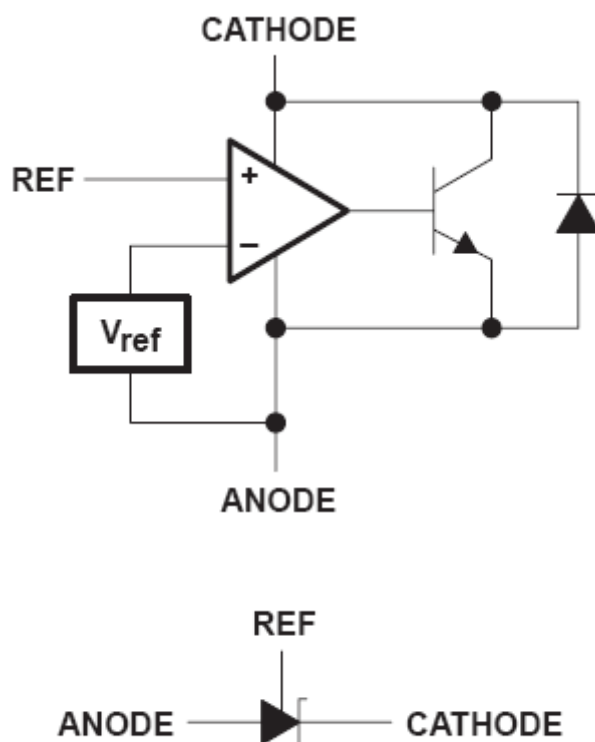
ORDERING INFORMATION

Part Number	Voltage Tolerance	Package	Part Marking
SP431AT92AG	1.0%	TO-92	SP431A
SP431BT92AG	0.5%	TO-92	SP431B

※ Week Code : A ~ Z (1 ~ 26) ; a ~ z (27 ~ 52)

※ SP431AT92AG / SP431BT92AG : Tape Ammo ; Pb-Free

BLOCK DIAGRAM





SP431

High Voltage Adjustable Precision Shunt Regulators

ABSOLUTE MAXIMUM RATINGS

(T_A=25°C Unless otherwise specified)

Parameter	Symbol	Value	Unit
Cathode Voltage	V _Z	37	V
Continuous Cathode Current	I _Z	150	mA
Reference Current	I _{REF}	10	mA
Operation Junction Temperature Range	T _J	-40 ~ +150	°C
Storage Temperature Range	T _{STG}	-65 ~ +150	°C
Lead Temperature Range (Soldering 10sec.)	T _{SOL}	260	°C
Thermal Resistance	Θ _{JA}	140	°C/W

The IC has a protection circuit against static electricity. Do not apply high static electricity or high voltage that exceeds the performance of the protection circuit to the IC.

ELECTRICAL CHARACTERISTICS

(T_A=25°C , Unless otherwise specified)

SP431XT92AG							
Parameter	Symbol	Conditions		Min.	Typ.	Max.	Unit
Reference Voltage	V _{REF}	V _Z = V _{REF} I _Z = 10mA	SP431AT92AG	2.475	2.5	2.525	V
			SP431BT92AG	2.487	2.5	2.513	
VREF Temp Deviation	V _{DEV}	T _A =-40°C ~ +80°C V _Z = V _{REF} , I _Z = 10mA			10	25	mV
Ratio of change in VREF to change in Cathode voltage	ΔV _{REF} / ΔV _Z	I _Z = 10mA ΔV _Z = 36V ~ V _{REF}			-1.4	-2.7	mV / V
Reference Input Current	I _{REF}	R ₁ =10KΩ , R ₂ = ∞ , I _Z = 10mA			2	4	uA
IREF Temp Deviation	I _{REF} (DEV)	T _A =-40°C ~ +80°C R ₁ =10KΩ , R ₂ = ∞ , I _Z = 10mA			0.8	2.5	uA
Off state Cathode Current	I _Z (OFF)	V _{REF} = 0V	V _Z = 36V		0.1	0.5	uA
Dynamic output impedance	R _Z	f < 1KHZ , V _Z = V _{REF} I _Z = 1mA ~ 100mA			0.25	0.5	Ω
Minimum Operation Current	I _Z (MIN)	V _Z = V _{REF}			0.4	0.7	mA



SP431

High Voltage Adjustable Precision Shunt Regulators

TESTING CIRCUIT

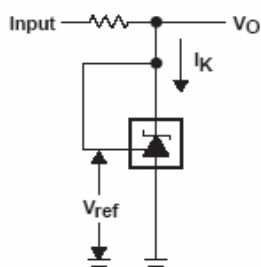


Figure 1. Test Circuit for $V_{KA} = V_{ref}$,
 $V_O = V_{KA} = V_{ref}$

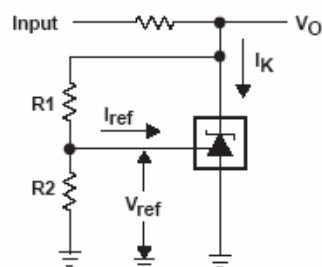


Figure 2. Test Circuit for $V_{KA} > V_{ref}$,
 $V_O = V_{KA} = V_{ref} \times (1 + R1/R2) + I_{ref} \times R1$

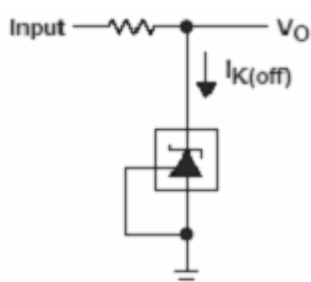


Figure 3. Test Circuit for $I_{K(off)}$

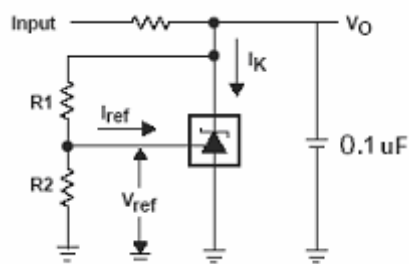


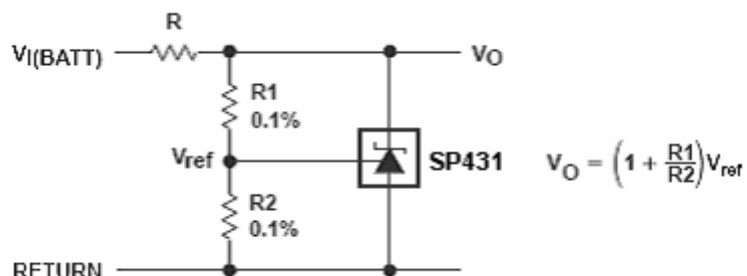
Figure 4. Test Circuit for $V_{KA} > V_{ref}$,
 $V_O = V_{KA} = V_{ref} \times (1 + R1/R2) + I_{ref} \times R1$



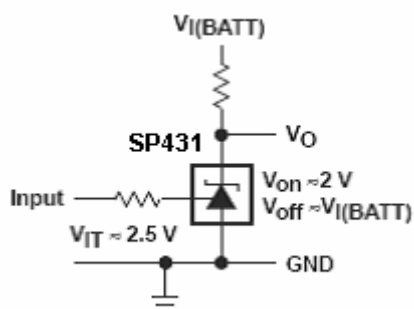
SP431

High Voltage Adjustable Precision Shunt Regulators

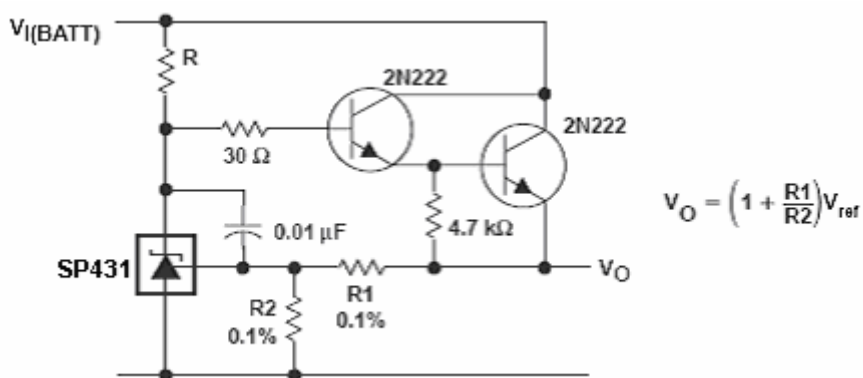
APPLICATION CIRCUIT



Shunt Regulator



Single-Supply Comparator With Temperature-Compensated Threshold



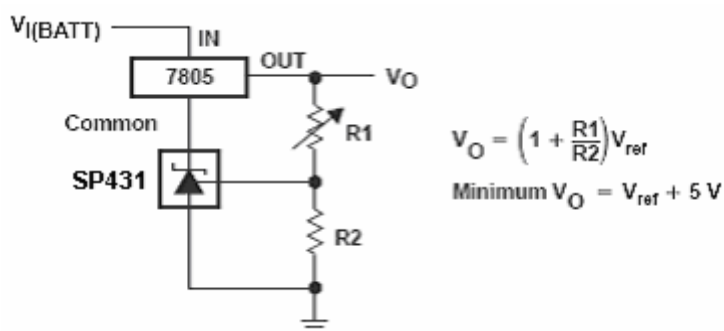
Precision High-Current Series Regulator



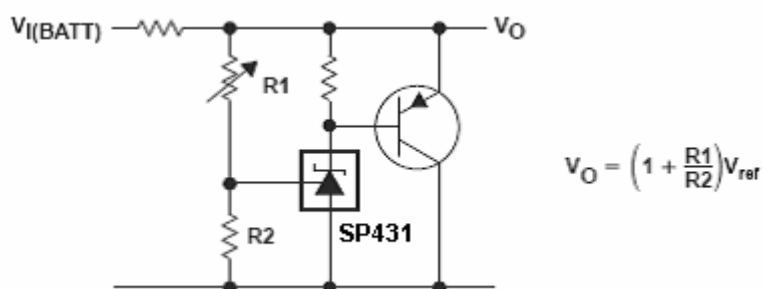
SP431

High Voltage Adjustable Precision Shunt Regulators

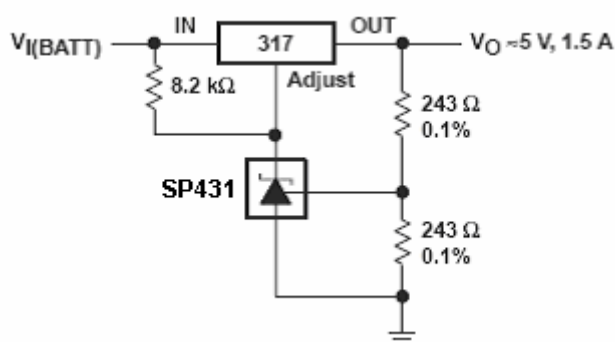
APPLICATION CIRCUIT



Output Control of a Three-Terminal Fixed Regulator



High-Current Shunt Regulator



Precision 5-V 1.5-A Regulator

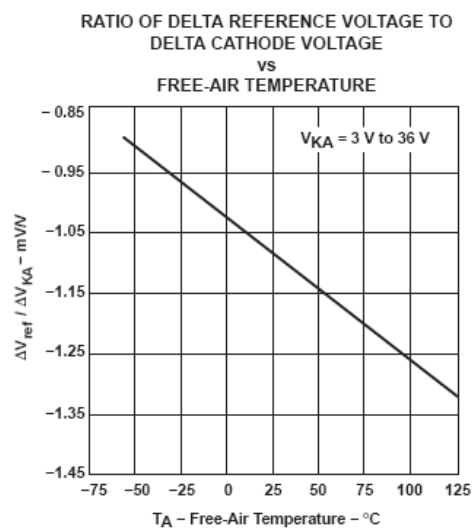
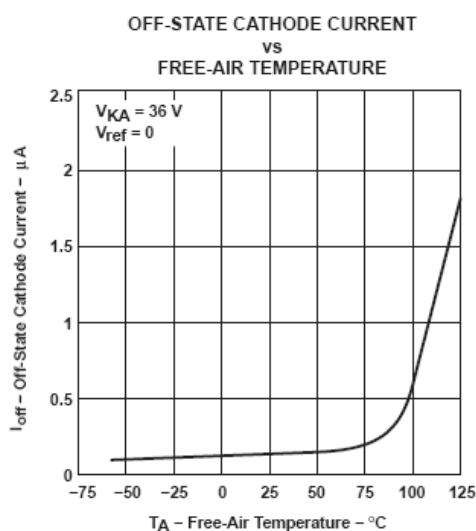
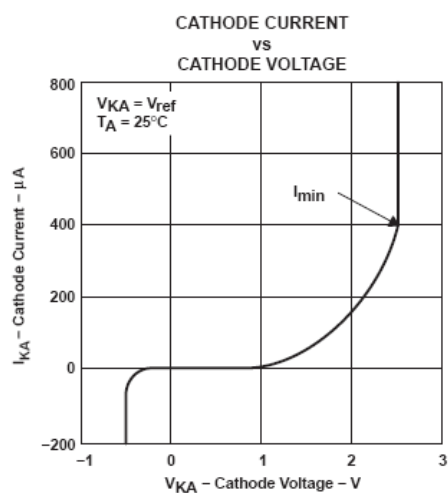
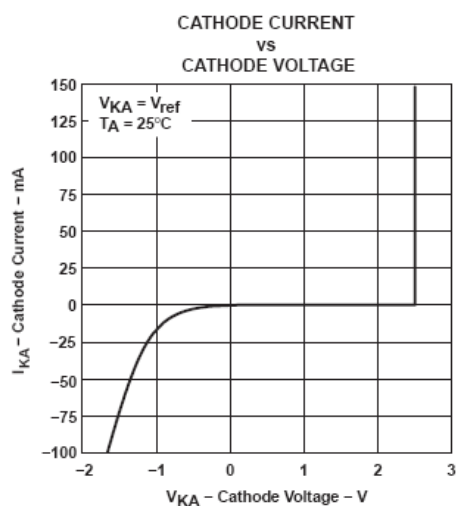
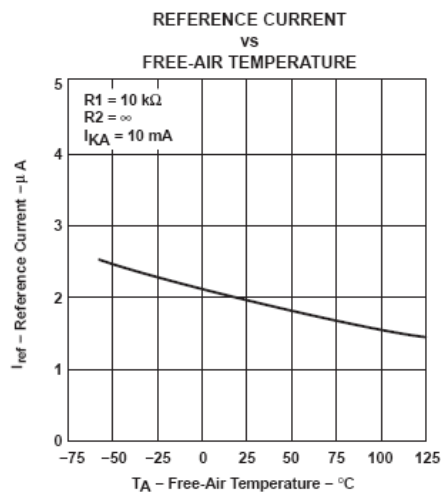
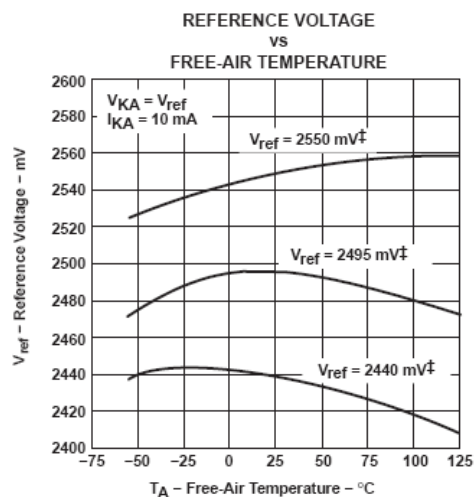




SP431

High Voltage Adjustable Precision Shunt Regulators

PERFORMANCE CHARACTERISTICS

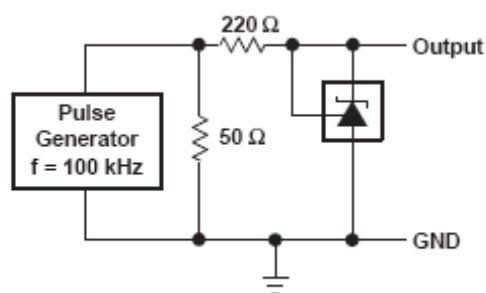
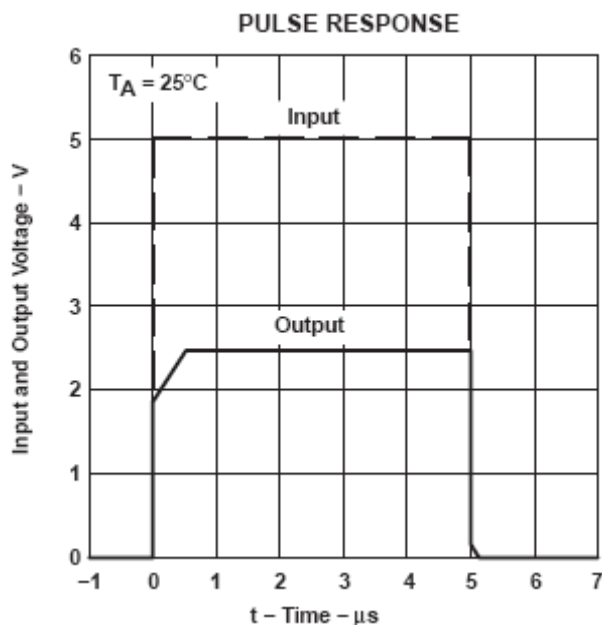




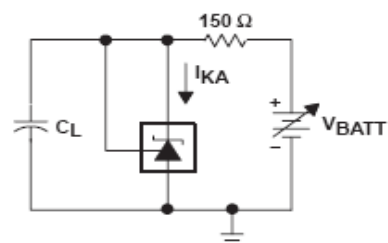
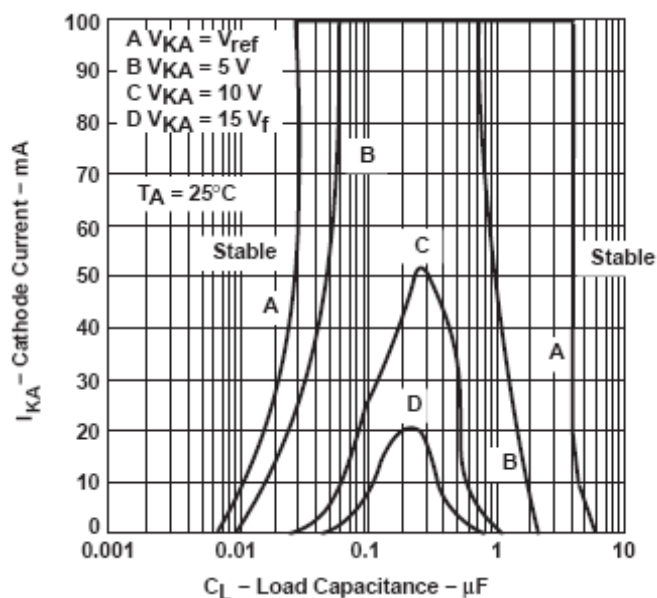
SP431

High Voltage Adjustable Precision Shunt Regulators

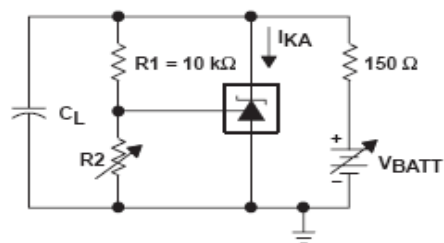
PERFORMANCE CHARACTERISTICS



TEST CIRCUIT FOR PULSE RESPONSE



TEST CIRCUIT FOR CURVE A



TEST CIRCUIT FOR CURVES B, C, AND D

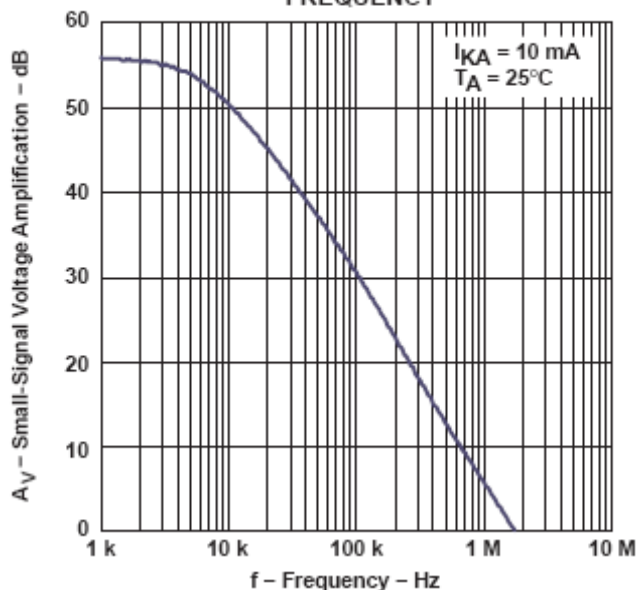


SP431

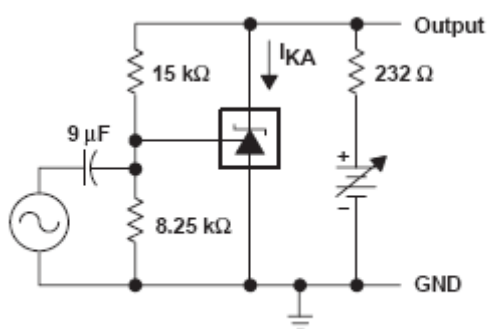
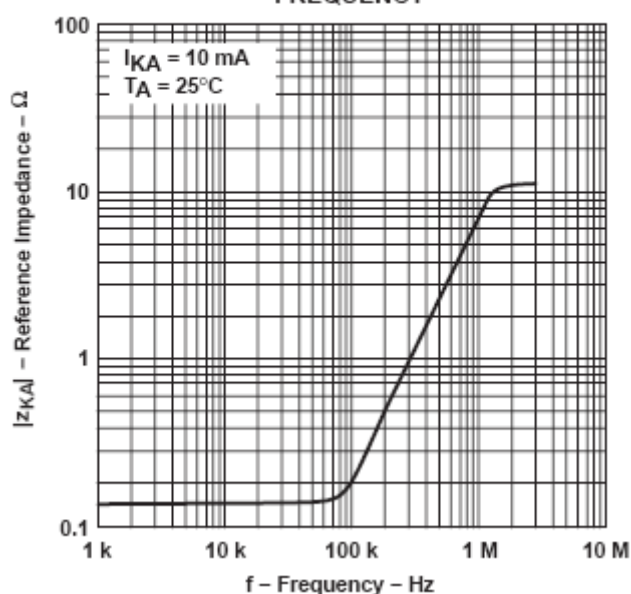
High Voltage Adjustable Precision Shunt Regulators

PERFORMANCE CHARACTERISTICS

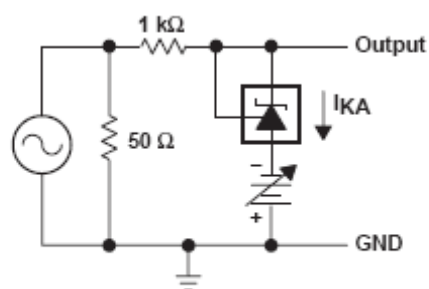
SMALL-SIGNAL VOLTAGE AMPLIFICATION
VS
FREQUENCY



REFERENCE IMPEDANCE
VS
FREQUENCY



TEST CIRCUIT FOR VOLTAGE AMPLIFICATION



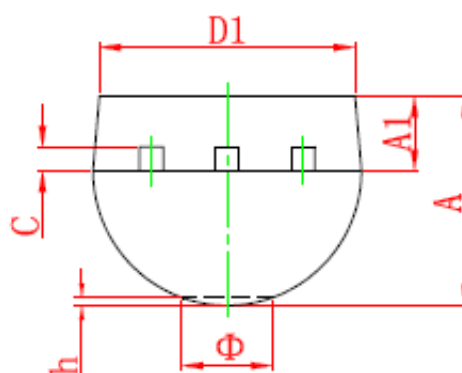
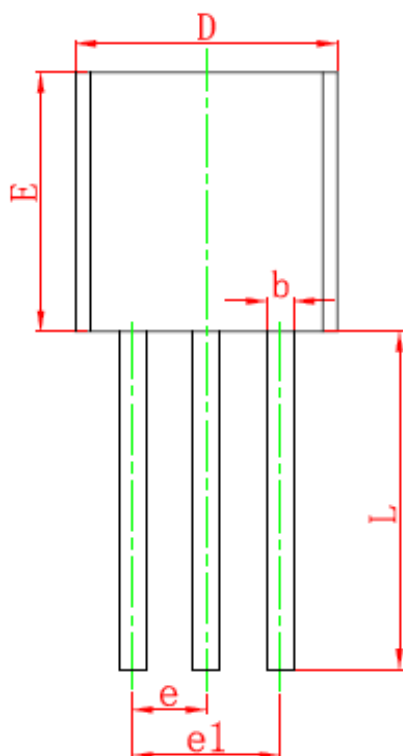
TEST CIRCUIT FOR REFERENCE IMPEDANCE



SP431

High Voltage Adjustable Precision Shunt Regulators

TO-92 PACKAGE OUTLINE



Symbol	Dimensions In Millimeters		Dimensions In Inches	
	Min	Max	Min	Max
A	3.300	3.700	0.130	0.146
A1	1.100	1.400	0.043	0.055
b	0.380	0.550	0.015	0.022
c	0.360	0.510	0.014	0.020
D	4.400	4.700	0.173	0.185
D1	3.430		0.135	
E	4.300	4.700	0.169	0.185
e	1.270 TYP		0.050 TYP	
e1	2.440	2.640	0.096	0.104
L	14.100	14.500	0.555	0.571
Φ		1.600		0.063
h	0.000	0.380	0.000	0.015



SP431

High Voltage Adjustable Precision Shunt Regulators

Information provided is alleged to be exact and consistent. SYNC Power Corporation presumes no responsibility for the penalties of use of such information or for any violation of patents or other rights of third parties which may result from its use. No license is granted by allegation or otherwise under any patent or patent rights of SYNC Power Corporation. Conditions mentioned in this publication are subject to change without notice. This publication surpasses and replaces all information previously supplied. SYNC Power Corporation products are not authorized for use as critical components in life support devices or systems without express written approval of SYNC Power Corporation.

©The SYNC Power logo is a registered trademark of SYNC Power Corporation

©2004 SYNC Power Corporation – Printed in Taiwan – All Rights Reserved

SYNC Power Corporation

9F-5, No.3-2, Park Street

NanKang District (NKSP), Taipei, Taiwan 115

Phone: 886-2-2655-8178

Fax: 886-2-2655-8468

©<http://www.syncpower.com>